

AURA

A023

Standard features

- Frame: wooden structure, solid fir wood and seat suspensions in reinforced elastic webbing.
- Paddings in eco-friendly open cell polyurethane foam, with different densities.
- Back cushions in "Extra soft" fiber.
- Covering in leather or fabric. Seat and back cushions coverings removable.
- Versions Cod.1421 - 1422 - 1671 - 1672 - 3031 - 3032 - 3051 - 3052 - 3221 - 3222 - S3031 - S3032 - 9507 with top in White Carrara marble (Cod.CA).
- Legs in Gunmetal (Cod.50), Satin Brass (Cod.51), Antique bronze (Cod.52).
- Stitching type Cod.01 + Cod.03 for leather covering.
- Stitching type Cod.03 for fabric covering.
- No bed version available.
- Sectional sides finished.

Optional features available upon request without any upcharge

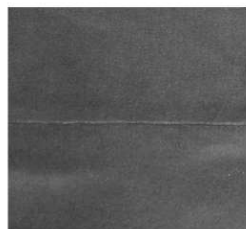
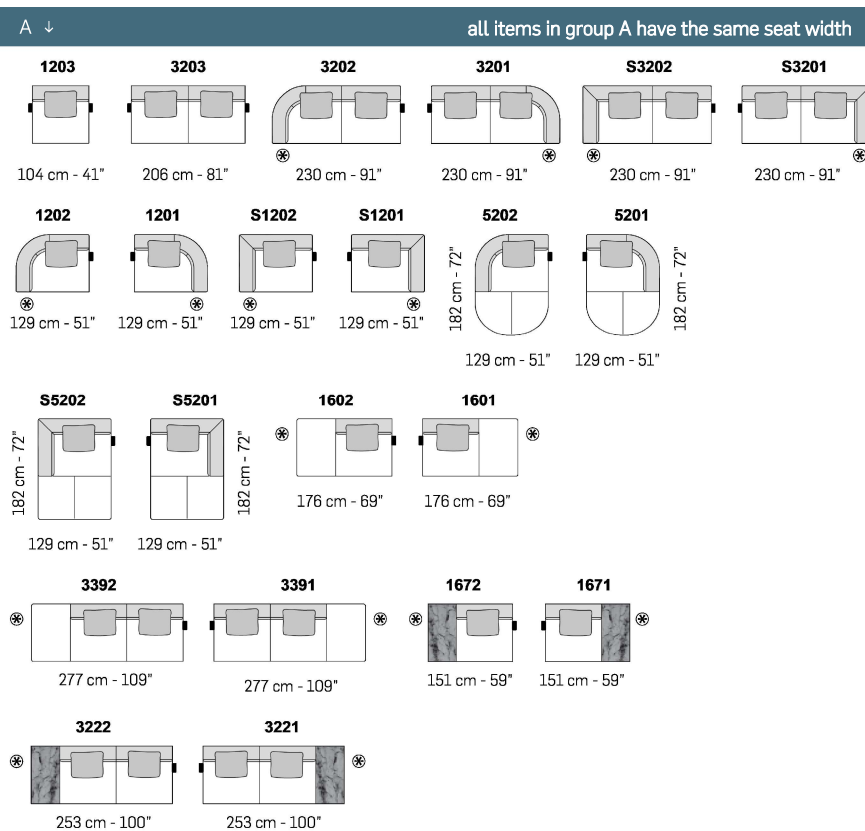
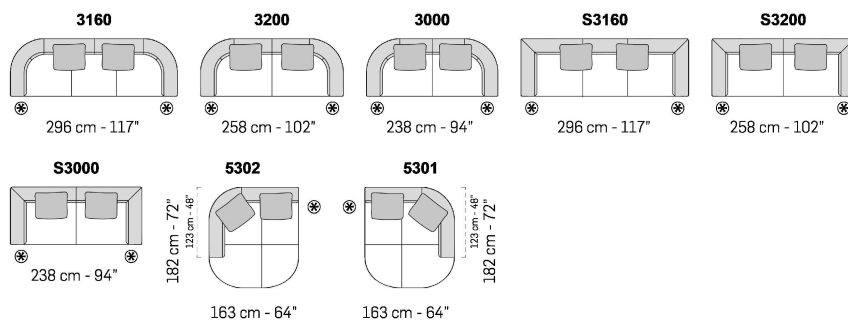
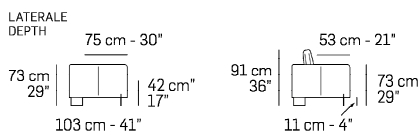
- No upcharge for combined coverings in case you choose only back cushions in a different covering in leather or fabric.
- Stitching, unless differently requested, will be matching the leather or fabric colour. Contrast stitching colour can be ordered at no extra charge. You might use as reference any Nicoline leather.

Optional features available upon request with an upcharge

- 7% upcharge for combined coverings, except as indicated in the paragraph "without any upcharge". Please refer to the notes at the beginning of pricelist.
- Versions Cod.1421 - 1422 - 1671 - 1672 - 3031 - 3032 - 3051 - 3052 - 3221 - 3222 - S3031 - S3032 - 9507 with top in Emperador marble (Cod.EM), Black Marquina marble (Cod.NM).
- Cushion Cod. 9010 made with silicone polyester fiber padding.
- Each version includes a certain number of back cushions as shown in the version drawing. Any additional cushions can be ordered individually. Please consider cushions cod.9050 and Cod.9010.

Notes

- Versions with asterisk (*) have always the terminal side finished with the possibility to be connected to modular elements.
- Different stitchings not available.
- **For some fabrics and velvets production dept. must apply the stitching Cod.00 / Cod.03 (as per picture below).**



Cod.00



Cod.03