

WING W009

Standard features

- Frame: wooden structure, solid fir wood and seat and back suspensions in reinforced elastic webbing.
- Paddings in eco-friendly open cell polyurethane foam, with different densities.
- Covering in leather or fabric. Not removable coverings.
- All the versions marked by the symbol "↑" are equipped with manual adjustable headrest.
- Legs (PM001) in Gunmetal (Cod.50), Antique bronze (Cod.52).
- Stitching type Cod.01 + Cod.07 for leather covering.
- Stitching type Cod.03 for fabric covering.
- No bed version available.
- Sectional sides not finished.

Optional features available upon request with no upcharge

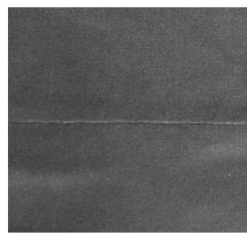
- Stitching, unless differently requested, will be matching the leather or fabric colour. Contrast stitching colour can be ordered at no extra charge. You might use as reference any Nicoline leather.
- Only for leather covering, stitching type Cod.03 available on armrest and backrest perimeter.
- Legs (PM002) in Gunmetal (Cod.50), Antique bronze (Cod.52).
- Legs (PM003) in Gunmetal (Cod.50), Antique bronze (Cod.52).

Optional features available upon request with an upcharge

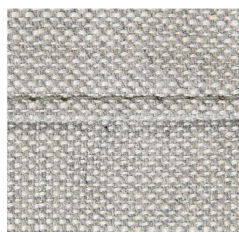
- Sectional sides finished (if possible).
- 7% upcharge for combined coverings. Please refer to the notes at the beginning of pricelist.

Notes

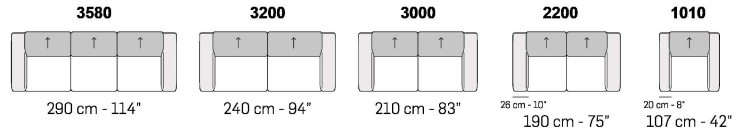
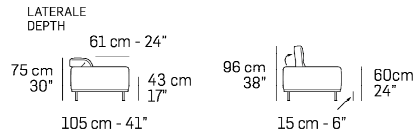
- Versions with asterisk (*) have always the terminal side finished with the possibility to be connected to modular elements.
- Different stitchings not available.
- **For some fabrics and velvets production dept. must apply the stitching Cod.00 / Cod.03 (as per picture below).**



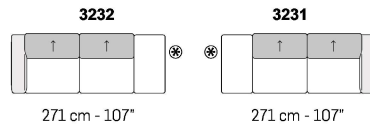
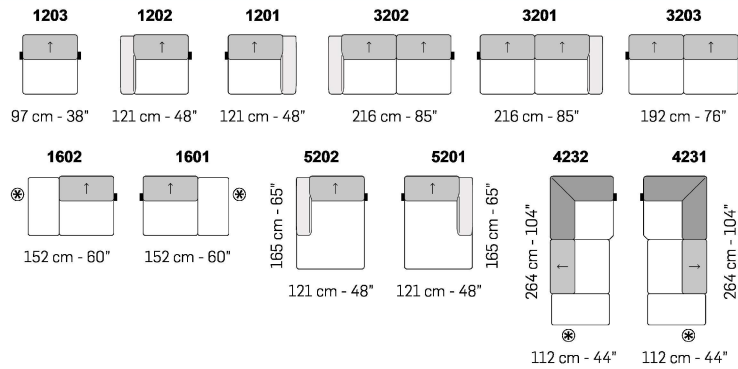
Cod.00



Cod.03



A ↓ all items in group A have the same seat width



B ↓ all items in group B have the same seat width

