

PAPILLON

P004

Standard features

- Frame: wooden structure, seat suspensions in reinforced elastic webbing.
- Paddings in eco-friendly open cell polyurethane foam, with different densities.
- Covering in leather or fabric. Not removable coverings.
- Reclining versions with electric mechanism for seat.
- All the versions marked by the symbol "↑" are equipped with manual adjustable headrest.
- Metal legs in Shiny (Cod.30), Satin (Cod.31), Gunmetal (cod.50).
- Stitching type cod.01 for frontal part of the arm. Remaining stitching cod.03 for leather and fabric coverings.
- No bed version available.
- Sectional sides not finished.

Optional features without any upcharge

- Contrast stitching available. Please refer to our leather collection for a thread color indication.

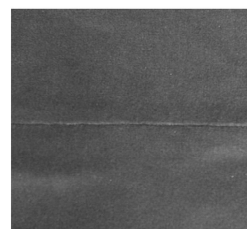
Optional features with upcharge

- Lithium battery to move the mechanism in the absence of electricity. Please consider one battery per recliner version.
- Sectional sides finished (if possible).
- 7% upcharge for combined coverings. Please refer to the notes at the beginning of pricelist.

Notes

- All reclining versions are made and delivered as separate elements.
- Different stitchings not available.

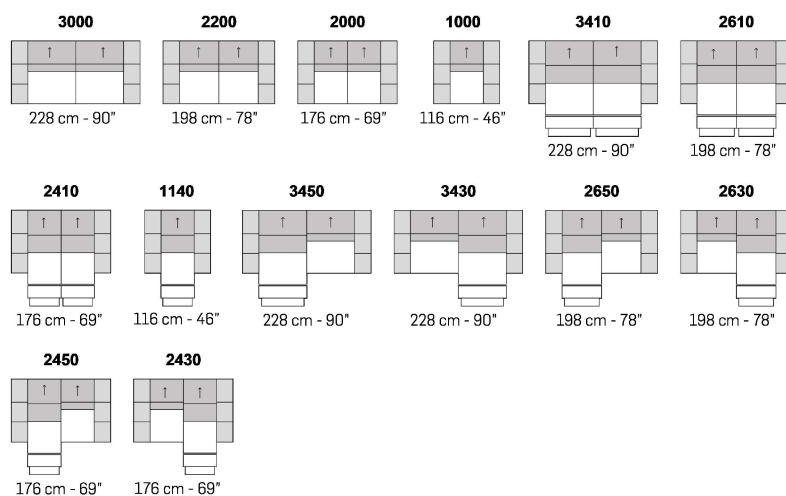
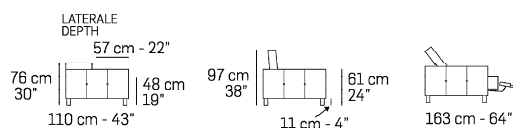
- For some fabrics and velvets production dept. must apply the stitching Cod.00 / Cod.03 (as per picture below).



Cod.00



Cod.03



A ↓

all items in group A have the same seat width

